

First Evangelical Lutheran Church of Redlands  
eNewsletter



Evangelical  
Lutheran Church  
in America

THIRD  
*Sunday*  
OF  
LENT

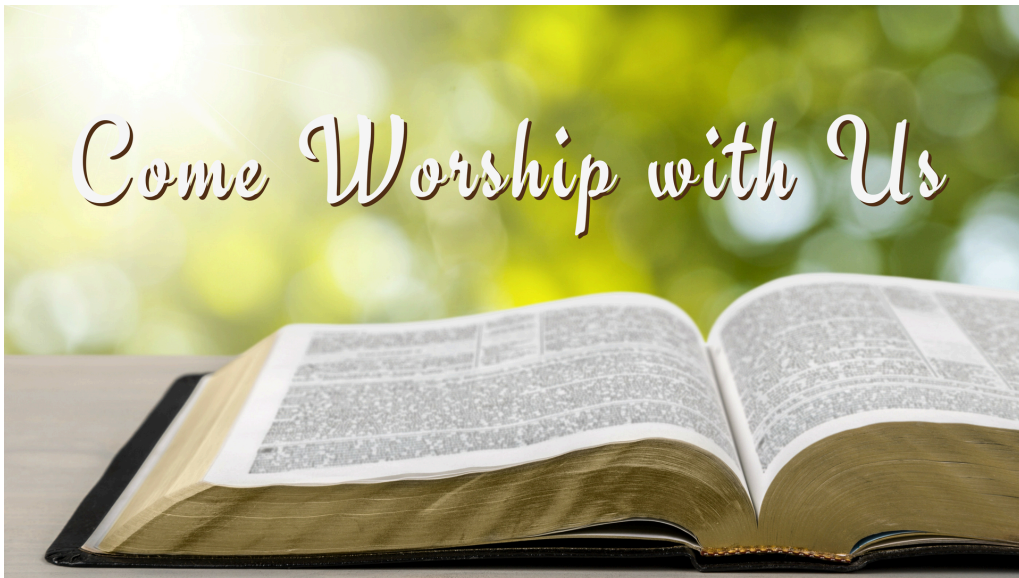
*Do not come near!  
Remove your sandals from your feet,  
for the place where you stand is  
holy ground.* Exodus 3:5

**March 23, 2025**

The warnings are plentiful and blunt on the third Sunday in Lent. Cut it out or get cut down! The warnings are accompanied by God's invitation to attentiveness: "Incline your ear, and come to me; listen, so that you may live." The landowner's ultimatum is forestalled by the gardener's readiness to till the ground one more year. That is good news for all of us. Thanks be to God!

**Readings and Psalm**

- [Isaiah 55:1-9](#)  
*Everyone who thirsts, come to the water; seek the Lord*
- [Psalm 63:1-8](#)  
*O God, eagerly I seek you; my soul thirsts for you. (Ps. 63:1)*
- [1 Corinthians 10:1-13](#)  
*Israel, baptized in cloud and seas, ate the same spiritual food as Christians*
- [Luke 13:1-9](#)  
*Unless you repent, you will perish: parable of the fig tree*



Every Sunday we offer two ways to worship:

In person worship each Sunday at 9am.  
Large Print Bulletins available in the Narthex

Online Worship is also available through our website at  
[www.firstlutheranredlands.org](http://www.firstlutheranredlands.org)

We livestream our online services. You can watch it live at 9 am or  
anytime throughout the week on our YouTube Channel.

Upcoming worship events:

Palm Sunday April 13 at 9:00 AM

Maundy Thursday April 17

Good Friday Community Service at First Presbyterian 7:00 PM

Easter Sunday at 9:00 AM

---

## Jesus is calling you....to help us!!

We would love to have some more help with readers and ushers for the church services! If you feel called to read scriptures or hand out bulletins and say "Hi" to folks, we would love to have your help!! Please see Mike Murphy if you would like to help with ushering and please call the office if you would like to be a reader for the worship services.



### This Week at First

Thursday	03/20	11:00 AM	Zoom Bible Study
		6:00 PM	Soup/Study for Lent
		7:30 PM	Chancel Choir Rehearsal
Saturday	03/22	10:00 AM	SDA Worship – Sanctuary/PH
		6:00 PM	Caring and Sharing - PH
Sunday	03/23	9:00 AM	Contemporary Sunday Worship – Sanctuary
		10:30 AM	Youth Forum – Youth Room
		1:00 PM	BATAK Church - Sanctuary
Wednesday	03/26	10:00 AM	COMIC Quilters

### Upcoming Dates

March 27	- Youth Hope delivery
April 13	- Palm Sunday service with Processional
	- Redlands Bicycle Classic
April 17	- Maundy Thursday service with dinner
April 18	- Good Friday at First Presbyterian 7pm
April 20	- Easter service
April 27	- Rev. Eric Shafer from Global Refuge will provide an update during worship

### **An Urgent Request**

URGENT: Global Refuge received a stop-work order from the government calling for us to immediately stop serving the nearly 6,000 newly arrived refugees in our care. These children and families fled war, violence, or persecution and came to the United States through the official U.S. Refugee Admissions Program. They arrived with little more than the clothes on their backs and rely on the initial assistance Global Refuge provides for urgent needs like housing, food, healthcare, finding work, and enrolling their children in school.

Stand with refugees.

Your gifts are the only way we can assure that refugees in our care can access the essential resources promised to them. Provide critical support to newly arrived children and families today at [globalrefuge.org/withrefugees](https://globalrefuge.org/withrefugees).

## **Interfaith Solidarity Statement on Refugees and Immigrants**

March 7, 2025

We stand united as people of faith in our commitments to welcome the stranger and to care for the most vulnerable – commitments rooted in our common understanding of our Creator’s love for all and call to serve our neighbors.

In these overlapping holy days of Purim, Lent, and Ramadan, we join our voices together to express our grave concern for the individuals and families seeking refuge in this country. We are particularly devastated and concerned for the welfare of the thousands of refugees who were approved and even ready for travel, only to have their plane tickets taken away.

For more than four decades, our faith-rooted organizations have partnered with the US government to ensure that people forced to flee their country because of conflict, violence, or persecution are vetted and arrive legally,

to be welcomed in this country with services to meet their basic needs.

The recent US State Department termination of cooperative agreements with the 10 national resettlement agencies in the US has made already-at-risk people even more vulnerable. We urge all people of faith and goodwill to join us in advocating with our elected leaders for our partnerships with the government to be restored so that we can fully work with those we are called to serve.

We invite you to join us in prayer for all people who are forced to flee home. May they know our deep and abiding commitment to their lives and well-being.

The Rev. Elizabeth A. Eaton, Presiding Bishop, Evangelical Lutheran Church in America

Alesia Frerichs, President & CEO, Lutheran Services in America, Myal Greene, President & CEO, World Relief, Mark Hetfield, President, HIAS, Rabbi Rick Jacobs, President, Union for Reform Judaism, Rabbi Hara Person, Chief Executive, Central Conference of American Rabbis, Kerry Alys Robinson, President & CEO, Catholic Charities USA, Basharat Saleem, Executive Director, Islamic Society of North America, Richard L. Santos, President & CEO, Church World Service, Ahmed Shehata, Chief Executive Officer, Islamic Relief USA, The Rev. Sarah Shipman, Director, Episcopal Migration Ministries, Krish O'Mara Vignarajah, President & CEO, Global Refuge

[Interfaith Solidarity Statement on Refugees and Immigrants](#)

---

**About the Evangelical Lutheran Church in America:**

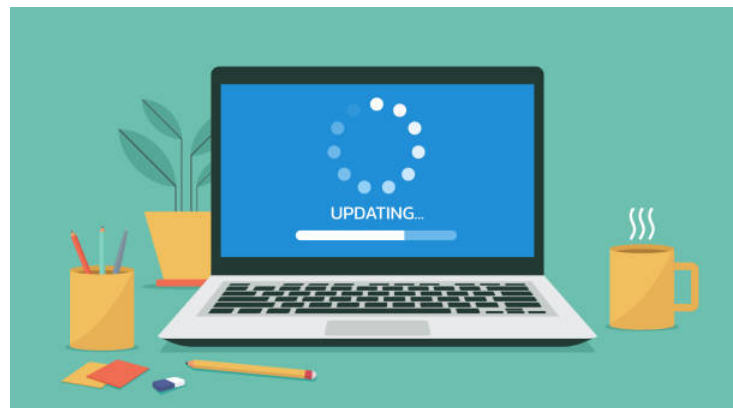
The ELCA is one of the largest Christian denominations in the United States, with 2.8 million members in more than 8,500 worshipping communities across the 50 states and in the Caribbean region. Known as the church of "God's work. Our hands.," the ELCA emphasizes the saving grace of God through faith in Jesus Christ, unity among Christians and service in the world. The ELCA's roots are in the writings of the German church reformer Martin Luther.

For information contact:

Candice Hill Buchbinder

Public Relations Manager

[Candice.HillBuchbinder@ELCA.org](mailto:Candice.HillBuchbinder@ELCA.org)



Have you checked out our new website?

Please head over to <https://www.firstlutheranredlands.org/> and check us out!  
**On this website, you will find the weekly newsletter, the online bulletin and the online worship link. Take a look at it today!!**



## Seafarers International House

*Seafarers International House (SIH) is the Lutheran response to the urgent needs of vulnerable seafarers and immigrants.*

### A Immigrant Mission Moment

**In this update**, we will give you a **step by step glimpse of what the last eight weeks have been like** for the world of migrants in general, in the city of New York in particular, and regarding our work with asylum seekers here at SIH. The situation is harrowing. Detention centers are filling up as migrant shelters are closing. Our partners in other Lutheran social ministries are decimated by defunding. What can we do?

**Firstly**, we do what people of faith are allowed to do - **we lament**:

*“My eyes are spent with weeping; my stomach churns; my bile is poured out on the ground because of the destruction of my people, because infants and babes faint in the streets of the city”.* Lamentations 2:11

**Secondly, we inform ourselves**, even though the news is often overwhelming these days. I encourage you to sign up for a webinar this Thursday at 3PM sponsored by our partners at Global Refuge (formally Lutheran Immigration and Refugee Service). In this webinar you will learn about the current state of affairs, be able to ask questions, and may feel connected to the larger immigrant community during this isolating time.

[https://globalrefuge-org.zoom.us/webinar/register/WN\\_km1nRmnQQeWuZ9ch-eflVw#/registration](https://globalrefuge-org.zoom.us/webinar/register/WN_km1nRmnQQeWuZ9ch-eflVw#/registration)

**Thirdly, we take action**. You can contact your legislators and tell them that Lutheran Social Ministries have been mislabeled as “money laundering” and “snake oil” organizations inaccurately and that funding must be restored to provide the basic civilized care to not only refugees who are already here (and now abandoned) but also to continue to abide by the law of this land and welcome those asylum seekers who are fleeing persecution in their home countries.

<https://www.house.gov/representatives/find-your-representative>

<https://www.senate.gov/senators/senators-contact.htm>

**Fourthly, what is happening at SIH and New York City?**

<https://www.theguardian.com/us-news/2025/mar/12/nyc-migrant-shelter-doj?ref=hellgatenyc.com>

The above article describes recent actions by the current administration which are intended to further dismantle the systems that provides housing, charity, and support to asylum seekers in New York. The Roosevelt Hotel, which has been functioning as the main intake shelter for migrants in the NYC area since early 2022, received a federal subpoena demanding names and personal information of all its residents, as well as information about “entities and/or individuals” involved in providing funding for such migrant housing programs. This move has the clear effect of intimidating both asylum seekers and those who provide any sort of institutional support towards their safety and wellbeing.

This is, perhaps, one of the reasons that our referrals to house asylum seekers have dropped in the past 8 weeks. Migrants are afraid of being on any sort of manifest or guest list, which we are required to maintain with the guesthouse rooms we are leasing at the Markle. This cause/effect has had the effect of making potential asylum seeker guests staying with us very leery of putting their actual names on our reservation list. This is still a “Sanctuary City”, the Metro NY Synod is still a “Sanctuary Synod” and we will continue to live that reality by welcoming and housing asylum seekers.

**Fifthly**, the button below links you to the PDF of a handy tool from our friends at Immigrant Legal Resource Center for you to keep and/or distribute: A “**Know your Rights**” Card. If someone questions you or your loved one about their immigration status, they can either give this card directly to the questioner or speak these words.

[https://www.ilrc.org/sites/default/files/documents/red\\_card-self\\_srv-english.pdf](https://www.ilrc.org/sites/default/files/documents/red_card-self_srv-english.pdf)

**The Lenten Challenge is on!**  
**From your synod's hunger leaders:**

Once again, the 5 synods in ELCA Region 2 are challenging one another during the season of Lent to participate in a communal spiritual journey, this year centered on the theme, 'A Watered Garden'. Funds raised through Lutheran Disaster Response will support important water projects at the Navajo Lutheran Mission in Rock Point, Arizona. The challenge: Participate in some [spiritual and physical practices](#) (choose 3) during the 40 days of Lent. The synod with the most participants wins!

Navajo Evangelical Lutheran Mission (NELM) is a 70-year-old ministry of the ELCA, where more than half the households either do not have running water, or do not have access to safe drinking water. [Learn about the water project.](#)

Yes! Daily Devotions on the theme by Pastor Bill Dohle are available via email beginning March 5. [Opt in here.](#)

Find all the resources you need to promote the 2025 Lenten Challenge in your congregation [here.](#)

You participated last year... will you join your synod in this Lenten journey once again?



**HELP!**

Whoever borrowed the Red rug doctor carpet cleaner from the garage...  
[please advise the office of its whereabouts...Thank You!](#)

**Please be aware that the Tithe.ly online giving platform will be phased out as of January 1, 2025. Please use ServantKeeper for online giving. If you need assistance with setting up your giving, please contact the office. Thank you!**





All are welcome at the new Contemporary Worship service at **9:00 am this Sunday, March 23**. Our fabulous youth group members will be leading the service. Spread the word and invite your friends and neighbors!

## Youth Forum



Youth Forum will be held March 23 following the worship service. in the Youth Room at 10:30!

## Thursday Morning Zoom Bible Study



11:00 am on zoom.

Join us as we discuss the upcoming gospel reading.  
Join Zoom Meeting:

<https://us02web.zoom.us/j/89545663534?pwd=MVRNYzd0bnRmT2ZDdWtPclBBSTRlZz09>

NEW Zoom Meeting ID: 898 6088 6981 NEW  
Passcode: 739765

Tapestry Retreat - March 28-30, 2025



Come experience God's love for you in a space designed with you in mind! Registration is required to attend. Please register by March 21.

Friday, March 28, 2025 to Sunday, March 30, 2025

#### Register

Registration open through 3/21/2025 8:45 PM PDT. You may register at: <https://tinyurl.com/459vcmbz>

#### Details

Tapestry is a ministry of the Pacifica Synod of the Evangelical Lutheran Church in America (ELCA), dedicated to inspiring and educating LGBTQIA+ individuals and allies. Through our retreat weekends, we foster community and deepen our understanding of Christ from a Queer perspective. Participants leave these retreats empowered to serve as beacons of faith, providing support and connection to those seeking a safe space to express their spirituality.

Our first weekend will be March 28-30, 2025. Join us for a weekend of spiritual renewal. We will hear talks from LGBTQ+ clergy and lay leaders; spend time in small groups to reflect, connect and create; enjoy free time for creating, praying or holy rest.

We will begin at 7 PM on Friday night with an open circle of getting to know each other and then proceed to a meditation before retiring for the evening. Meals included for the weekend: Saturday - breakfast, lunch, and dinner, and Sunday - breakfast and lunch. There will be plenty of snacks throughout the weekend to satisfy even the most voracious appetites.

The Retreat Center charges \$230 for the weekend (shared room) and \$280 for the weekend (single room), but in order to make this retreat possible for everyone, you are invited to pay whatever you can to attend, even if it's \$0!

Come experience God's love for you in a space designed with you in mind! **Registration is required to attend.** Click the link above to register by March 21.

If you are interested in volunteering to serve during this event, please contact Pastor Rachel Reeder at [revrachelreeder@gmail.com](mailto:revrachelreeder@gmail.com).

*Disclaimer: This retreat is designed for and will be centering around LGBTQIA+ persons and their spiritual refreshment. We believe that God created LGBTQIA+ persons in God's image and we affirm all who attend in their identities as they present them. We welcome allies to help create a space free from discrimination, othering or voyeurism.*

For registration questions, please contact Terri Robertson at 714.692.2791, Ext. 732 or by email at [terrirobertson@pacificasynod.org](mailto:terrirobertson@pacificasynod.org).





Kay McMunn	March 01
Joseph-James Greaney	March 08
Mike Murphy	March 11
Erick Hendrickson	March 12
Stefan Krstenansky	March 13
Francesca Krstenansky	March 13
Claudia Havard	March 14
Gerald Bean	March 17
Karen Pace	March 21
Pliny "Mac" Barnes	March 23
James Lehner	March 26
Priya Victor	March 26
Esmee Tooke	March 28
Cameron Kundig	March 29
Carol Baker	March 31



David and Julie Garcia	March 16	62 years
Bryon and Karen Pace	March 16	12 years
Eric and Linda Reinhard	March 29	45 years

Youth Hope Meal Delivery



First Lutheran is happy to support Youth Hope Ministries. Our “God’s Work, Our Hands” project of donating ponchos was greatly appreciated. In addition, in cooperation with Plymouth Village, we pick up meals they have prepared, and deliver them to the Youth Hope facility (on Redlands Blvd). This simple service happens about once a month. If you would like more information or you are interested in participating, please contact Karen Frederickson, Sue Lehner or call Lauren in the church office.

## Next delivery is March 27th

---

Book Club – April 6th at 6:30 PM  
Fireside Room



It is 1985 in a small Irish town. During the weeks leading up to Christmas, Bill Furlong, a coal merchant and family man faces into his busiest season. Early one morning, while delivering an order to the local convent, Bill makes a discovery which forces him to confront both his past and the complicit silences of a town controlled by the church.

An international bestseller, *Small Things Like These* is a deeply affecting story of hope, quiet heroism, and empathy from one of our most critically lauded and iconic writers.

---



April 9-13, 2025

Please make sure you give yourself plenty of time to arrive at church on April 13th!

---

# guest speaker

Rev Eric Shafer from Global Refuge  
will give an update on their work during worship on April 27  
and hold discussion during Adult Forum after worship. We look forward to hosting and  
hearing about this important update!

---



## **Father's Day at the Inland Empire 66er's Game!**

We have been invited to celebrate Father's Day at the IE 66er's ball game.

It will be \$12.00 a ticket and get this ..... we are in the Club Levels seats which are in the shade!!  
Bring your friends, neighbors and family members to join us! We have 20 tickets reserved for our group.

The ball club is going to recognize us on the Leader Board!

It will be a great event - a sign up sheet will be available closer to the date- you do not want to miss this!!

---



Our Lenten Soup Supper/Service will be held on Thursday nights this year starting Thursday, March 13. Soup Supper will start at 6pm and the service will start at 7pm. Both will be in the Parish Hall. Everyone is invited to bring a soup, bread or a desert to share. There will be a free will offering basket and the proceeds will go towards costs for the Contemporary worship service. Each week we'll hear a meditation on The Lord's Prayer. The choir will rehearse after the service at 7:30pm in the sanctuary.

---



#### 2025 Lenten Devotional

This year, a group of pastors from the Redlands area created a Lenten Devotional about the Lord's Prayer for use during this season. We have provided a link of the devotional for you to use during your Lenten journey. We hope you enjoy this devotional and find time to use it daily!

[2025 Lenten Devotional](#)

---



#### CHANCEL CHOIR REHEARSAL

The Chancel Choir is currently rehearsing anthems for the 2024-25 season at 7 p.m. every Thursday in the sanctuary. Current and former members interested in participating as well as other members who like to sing in a group setting are urged to attend. No auditions are required. The choir will continue to rehearse every Thursday at 7 p.m. unless otherwise noted.

***During the Lenten season, March 13 to April 10, choir rehearsal will take place on Thursdays at 7:30 pm***



#### ***2025 Altar Flower Ordering Information***

We love it when flowers grace the worship space!  
Please reserve your bouquet by following the process below:

Reserve your date by writing your name AND phone on the Flower Chart on the date(s) you select.

Fill out a reservation form at the same time as your reservation on the chart. The forms are located next to the chart and should then be placed in the offering plate or mailed to the church office.

The flowers will be ordered for you.

Please pay the church \$55 during the month of your reservation. Please note with your payment the date of your reservation.

Questions: Contact Mitch (909-798-3320)

**Thank you for your contribution!**



### 2025 Easter Lily Orders

It is time to order **Easter Lilies** for the Sanctuary on Easter Sunday. Each lily will cost \$12.00 this year. Please fill out the envelope with your name and your memorial or honor inscription and include your payment inside the envelope.

Deadline for ordering your lilies will be April 14<sup>th</sup>, 2025.

As part of our ongoing ministry at First Lutheran we will be sending cards out to members for their Birthday or Anniversary. We would also like to send a card for support if there is a need (sympathy, serious illness). A card will be sent through regular mail or by email if necessary. Please contact the Church Office or Alison Schooley directly with the information needed to send a card. We want everyone to know they are thought about and that their Church family cares.

Peace,

Alison Schooley

[alisonschooley@yahoo.com](mailto:alisonschooley@yahoo.com)

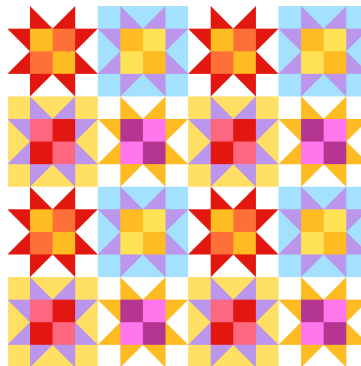


**C.O.M.I.C.**  
(Cloths of Many Incredible Colors)

### Quilters Group News

Our meetings are held on Wednesday mornings at 10 am in the Fireside Room (right across from the Pre-School building.) We welcome all women and men who want to share in the fun & camaraderie in learning and sharing quilting skills. No experience is needed. I have learned so much from all the more experienced quilters, who so generously share their knowledge & skills. The COMIC Quilters not only make quilts for special events, but we also work on some very simple quilts for the CCLM (Central City Lutheran Mission) Men's shelter.

All are welcome...  
Come & check us out!  
Sue Lehner  
(909)798-7925



---

## Treasurer's Report as of January 31, 2025

Total Income	\$25,850	down 7%
Total Expenses	\$37,017	
Total Loss	\$11,167	



### WAYS to GIVE to our CHURCH

**Pew Envelopes** - Cash or check. Please write your personal tithing number on the front.

Online giving through ServantKeeper .

Scan the QR Code below and it will take you to our website where you can find the Green Give button.

Many members do not use tithing envelopes anymore,  
because they are tithing either online or by bank bill pay.  
If you are one of those members and would not mind changing your number at the beginning of the year, we  
would love to be able to save your printed envelope for new members and issue you a new number for  
2025. Please let us know if you are interested in doing this via email or a note in the offering plate.




---

## **Meet your 2025 Church Council Members!**

### **Introducing Your Church Council and the Unsung Heroes**

We want to take a moment to introduce you to the dedicated individuals who serve on our Church Council, who work tirelessly behind the scenes to make our church thrive. These unsung heroes play a vital role in fulfilling our mission and creating a vibrant worship and community experience for all.

**Council meetings are held at 6:00 PM on the last Monday of the month in the Conference room adjacent to the Office.**



**Pastor Rachel Reeder (Pastor); B.B. Quinones(Member at Large), Larry Davenport (President); Jerry Bean (Vice President), Richard Thibedeau, (Member at Large), Kim Hudson (Treasurer); Roger Swenson (Member at Large), and Alison Schooley (Secretary), Abraham Dree (Member at Large).**

---

**Please Note that our office hours are  
Monday - Thursday 12:30 PM - 5:00 PM**

**The Office is closed on Fridays.  
Pastor Rachel's days off are Friday and Saturday.  
However, she is available by phone or text!**

---

**First Evangelical Lutheran Church**  
1207 W. Cypress Ave.  
Redlands, CA 92373  
Tel: (909) 7932267

Want to change how you receive these emails?  
You can [update your preferences](#) or [unsubscribe from this list](#)



This email was sent to <<Email Address>>

[why did I get this?](#) [unsubscribe from this list](#) [update subscription preferences](#)  
First Evangelical Lutheran Church · 1207 W Cypress Ave. · Redlands, California 92373 · USA

